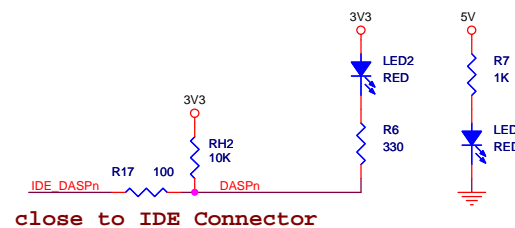
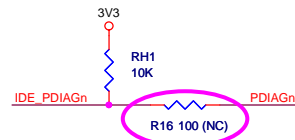
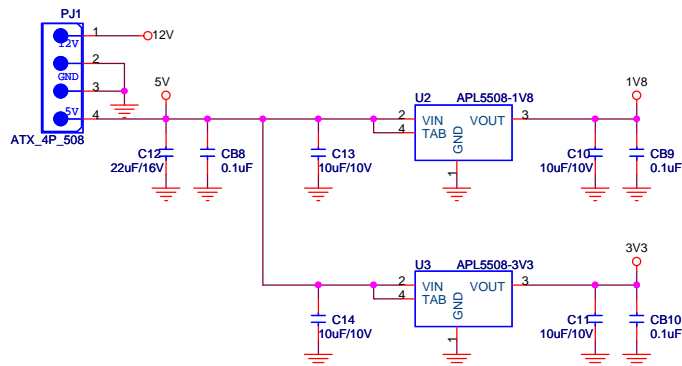
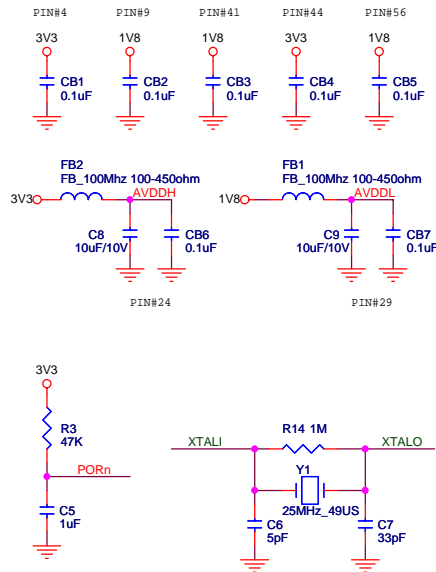
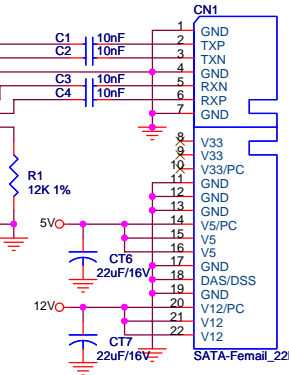


Bypass CAP, close to power pins

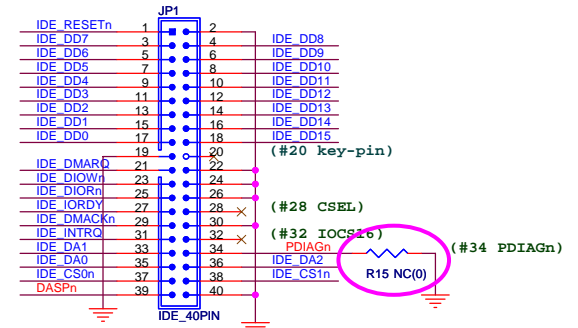


UAI TP1 Reserve for measure SATA
UAO TP2 Eye Pattern.
PHYRDY TP3

C1,C2,C3,C4 Place near SATA connector

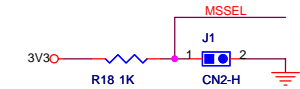


To SATA Hard Disk



JP1 use male connector and pass through Cable.	JP1 use female connector and unused Cable.
R15=NC, R16=100	R15=0, R16=NC

- 1.Mode[2]=1 Host Bridge (IDE to SATA HDD/ODD)
Mode[2:0]=110 =>150MB/s
Mode[2:0]=101 =>133MB/s
- 2.CLKSEL[1:0]=01 25MHz
- 3.SSCEN=0 Disable
- 4.FXDMA=0 Adjustable Speed rate according set Feature Command
FXDMA=1--->Mode[1:0]
- 5.PMEN=0 Disable
- 6.ATAIOEN=1 Enable ATA output
- 7.MSSEL=0 : Device 0 (Master)
MSSEL=1 : Device 1 (Slave)



JMicon Technology Corp.		
PCB File Name	JM20330-EVB-002-3	
Title	Host Bridge (IDE to SATA HDD/ODD)	
Size B	Document Number JM20330_IDE2SATA_1V2_FoMP.DSN	Rev 1.2
Date:	Tuesday, August 14, 2007	Sheet 1 of 1